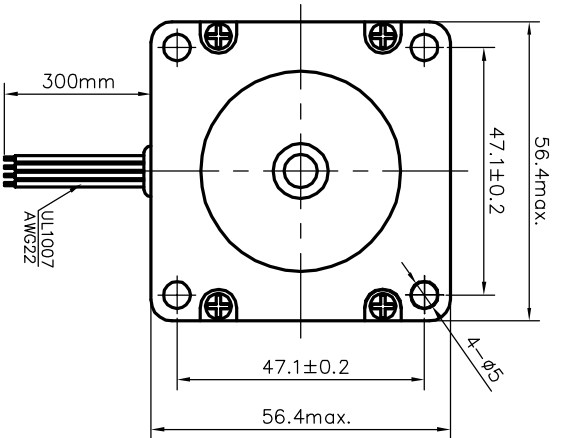
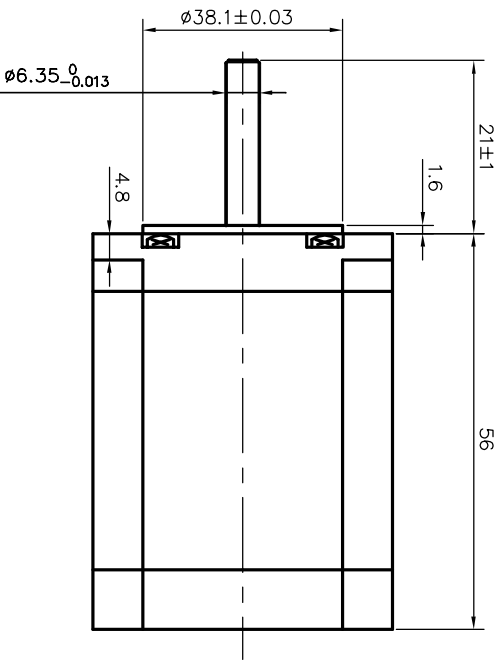
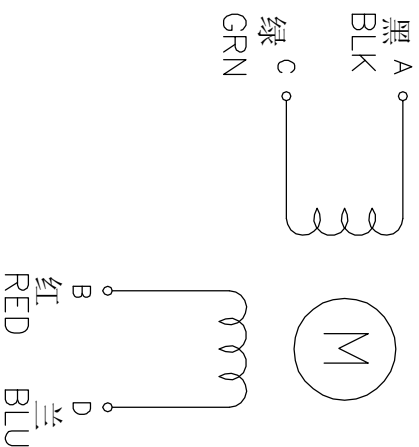


Dimension:  
Unit=mm



Wiring Diagram:



Specifications:

相数	Phase	2	Comment
步距角	Step Angle	1.8	deg.
电压	Voltage	2.5	V
相电流	Current	2.8	A
相电阻	Resistance	0.9	$\Omega$
相电感	Inductance	2.5	mH
静力矩	Holding Torque	1.6	kg.cm
绝缘等级	Insulation Class	B	
重量	Mass	0.65	kg

Title:				Specification				57STH56-2804A	
REV.	QTY.	No.	DATE	DESIGN	STD.	SIG.		CLS.MAK	WEIGHT SCALE
CHECK									
PROC.				APPR.				PAGE: OF PAGES	
								Suncor Motor	
								www.suncormotor.com	